
St Ita's Catholic Primary School

Student 1:1 Device Program



ST ITA'S
CATHOLIC PRIMARY SCHOOL
DUTTON PARK

Policy and Guidelines Booklet

WHAT IS A 1:1 DEVICE PROGRAM?

1:1 (One-to-One) learning provides every student and teacher access to his or her own mobile device in a wireless environment allowing students to learn at their own pace and ability levels. 1:1 initiatives have gained momentum worldwide, and are increasingly seen as a key to transforming education and better preparing students to succeed in a global world.

In the 1:1 Device Program, students' access to a personal mobile device (such as an iPad or laptop) and the Internet enables them to be self-directed and receive highly personalised instruction. Teachers can create personalised learning opportunities for each child, addressing his or her unique needs. Students use their personal devices to construct knowledge, collaborate and communicate, problem-solve in a real-world context, be innovative and self-regulate their learning. At the same time, they gain valuable 21st century skills that will be beneficial throughout their lives and careers.

1:1 DEVICE PROGRAM – AN EDUCATIONAL AND CATHOLIC IMPERATIVE

As a Catholic Christian community, we educate all to live the gospel of Jesus Christ as successful, creative and confident, active and informed learners empowered to shape and enrich our world. (BCE Learning and Teaching Framework 2012)

The Australian Curriculum reflects the Melbourne Declaration on the Educational Goals for Young Australians (MCEETYA 2008) that young people are entitled to develop the knowledge, skills and confidence to make ICT work for them at school, at home, at work and in their communities.

The Australian Curriculum describes specific knowledge, understanding and skills about technology and its use in ways that are interactive, multimodal and provide flexibility across contexts and audiences. Ways to use, share, develop and communicate with ICT are named within the content of individual Learning Areas of the curriculum and the use of ICT is integrated across all Learning Areas through the ICT General Capability.

Catholic Education is called to meet the challenges of learning in a digital age. Expressed in the words of Pope Francis, *“The revolution taking place in communications media and in information technologies represents a great and thrilling challenge; may we respond to that challenge with fresh energy and imagination as we seek to share with others the beauty of God”.* (Pope Francis: 2014)

Learning and living are not two separate endeavours that students engage with in isolation. Technologies and their uses are pervasive across all areas of our society and modern living.

In response, we need to ensure that learning can take place in flexible, resource-rich environments where technology supports connected, real life and real-time learning and teaching.

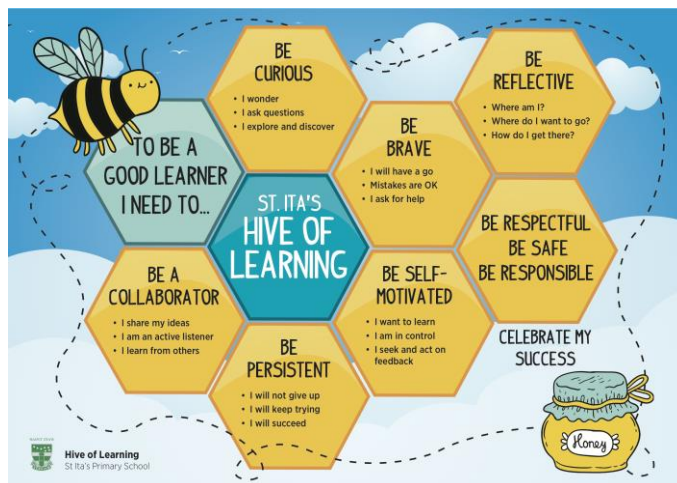
● ● ●
21st century education integrates technologies, engaging students in ways not previously possible, creating new learning and teaching possibilities, enhancing achievement and extending interactions with local and global communities.”

MCEETYA – Contemporary Learning: Learning in an Online World (2005)

● ● ●

The **St Ita's Catholic Primary School** approach is developed out of these emerging issues related to the implementation of the *Australian Curriculum and the General Capabilities*, *The Melbourne Declaration on Educational Goals for Young Australians* and implications for contemporary learning and teaching in all schools in Brisbane Catholic Education.

The St Ita's vision for learning is that all students understand what it means to be a good learner in order to achieve success, to be able to reflect about themselves as learners, and to talk about the learning process and attributes that contribute to successful learning (*St Ita's Hive of Learning*). The implementation of a 1:1 Device Program at St Ita's provides enhanced opportunities for our students to develop these attributes in a way previously unimaginable.



1:1 DEVICE PROGRAM AT ST ITA'S PRIMARY SCHOOL

Students at St Ita's Primary School participate in a 1:1 Device Program from Years 3-6. Each student will be issued with a school-owned iPad or laptop for his or her educational use whilst enrolled at the school. All student devices in Year 3 are to remain at school. Devices issued to students in Years 4-6 may be taken home for the sole purpose of supporting classroom learning.

1:1 DEVICE PROGRAM: THE ROLE OF THE SCHOOL, STUDENT AND PARENTS

The roles of the school, student and parents in the St Ita's 1:1 Device Program are outlined below, with the associated actions and responsibilities listed in the following section.

The role of the School

The school provides **leadership** (vision, planning and management) to ensure that the 1:1 Device Program is driven by an educational imperative, focusing on successful **learning** outcomes and supporting the school's vision for learning. School leadership will work with teachers to create contemporary learning environments that allow students to learn. This will include engaging teachers in continuous learning to enhance their **professional practice**. As with all aspects of learning, the school values **parent and community engagement** and the important role this plays in achieving successful outcomes. The school plans for and manages the **technical environment and functional aspects** including security, to ensure the program's success.

The role of the Student

Students understand that the primary purpose of the 1:1 Device Program is to support their learning. Students use technology in their learning to investigate, collaborate and communicate in a safe and responsible way that reflects good digital citizenship.

The role of Parents/Caregivers

Parents/Caregivers are the first educators of their children and have a vital role to play in their child's learning. Working in partnership with the school will help to ensure the success of the 1:1 Device Program. Parents have an important role in the co-education of their child about issues related to the care of technology and its safe and responsible use. Parent/Caregivers support the school by maintaining an active interest in their child's learning including understanding how technology is being used to support learning in the classroom and at home, as well as meeting financial obligations associated with the program.

SCHOOL, STUDENT AND PARENT/CAREGIVER RESPONSIBILITIES AND ACTIONS

School Responsibilities and Actions

The school is responsible for providing **leadership** for the 1:1 Device Program and school leaders play an integral role in this leadership. Effective leadership plans for and manages considerations related to **successful learning; professional practice; parent and community engagement;** as well as **technical environment and functional aspects**. Responsibilities and actions for the school in relation to the 1:1 Device Program include:

- **Successful Learning**
 - Creating the conditions that enable the school's vision for learning to be realised.
 - Ensuring that the 1:1 Device Program is driven by an educational imperative, focusing on successful learning outcomes.
 - Creating learning environments that enable connected, real life learning, within which technology is used flexibly and innovatively to improve learning.
 - Ensuring alignment with other school policies including behaviour, in particular ensuring that students are supported to use technology safely and responsibly.
- **Professional Practice**
 - Ensuring that teachers engage in continuous learning (through professional learning and sharing) to enhance their professional practice and the practices of their students.
 - Ensuring decisions are informed by evidence of impact on learning, including how technology supports students to develop the dispositions necessary for a successful future.
- **Parent and Community Engagement**
 - Providing parents/caregivers with information that enables them to be involved as key partners in learning, including through the 1:1 Device Program.
 - Providing parents with information about the logistics of the 1:1 Device Program, including costs, parent and student responsibilities and related policies and procedures.
- **Technical Environment and Functional Aspects**
 - Driving responsible stewardship by ensuring decision-making processes are collaborative, transparent and accountable.
 - Planning for and managing safe and connected learning environments. Elements include ensuring:
 - Appropriate device selection and support, network infrastructure and system access;
 - Access to software that will support learning and data management/storage, which adhere to safety and privacy principles;

- Technical support to assist students to manage the device and keep it operational;
- Clear operational procedures including the right to inspect the device and those which support the teacher to manage technology in the classroom.

Student Responsibilities and Actions

Student responsibilities and actions in relation to the 1:1 Device Program include:

- **Educational Purpose**
 - Being active participants in their learning and using their device for educational purposes. This extends to the use of the school network, including the Internet and all associated infrastructure as well as ensuring that non-educational software (where permitted) or data, does not inhibit the use of the device as a learning tool.

- **Using Technology Safely and Responsibly**
 - Complying with all elements of the school's Acceptable Use of Computer and Internet Resources policy and the School's Behaviour policy to ensure the safe and responsible use of technology including:
 - Applying personal safety practices by keeping personal information private and securing digital information;
 - Reporting unsafe behaviours to the school;
 - Using technology ethically (e.g. not accessing or sending content to bully or defame others or that is illegal, dangerous or offensive);
 - Engaging in appropriate practices to recognise the intellectual property (including copyright) of themselves and others. This extends to only installing/storing appropriately licensed software (and material e.g. downloads) on the device.

- **Device Management & Security**
 - Complying with all elements of the school's *Acceptable Use of Computer and Internet Resources Policy*.
 - Bringing the device to school each day ready for learning:
 - Fully charged and operational. Students seek support to resolve technical problems according to school procedures;
 - Clean and clearly labelled with authorised identification.
 - Keeping the device safe and secure at all times, including:
 - Following school and classroom rules for the use, transport and storage of devices;
 - Transporting the device in the school provided protective casing, and placing it in school bags whilst travelling to and from school;
 - Reporting to the school instances of loss, damage or theft of the device as soon as possible (police report may be required).
 - Caring for the device including:
 - Keeping it clean;
 - Not removing any labels/barcodes placed on the device by the school;
 - Storing it safely at school and at home when not in use;
 - Carrying the device around the classroom or home responsibly,
 - Managing the device in alignment with school behaviour policy, including:

- Accessing the internet only through the wireless network when at school;
- Maintaining the network setting required to connect to the school network without alteration, unless directed to do so by the school;
- Backing up data and updating software as recommended/directed by the school.

Parent/Caregiver Responsibilities and Actions

Responsibilities and actions for parents in relation to the 1:1 Device Program include:

- Maintaining an active interest in your child’s education by understanding how technology is being used to support learning.
- Supporting the care and responsible use of technology by:
 - Working alongside the school to educate your child about safe and responsible use of technology.
 - Monitoring the use of the device outside of school including internet access.
 - Supporting and reinforcing school policies and procedures including:
 - Acceptable Use of Technology and Internet Resources Policy;
 - School Behaviour Policy;
 - Operational procedures and responsibilities in relation to the 1:1 Device Program including ensuring safe and secure storage of the device;
 - Acknowledging the school’s right to inspect the device.
- Ensuring the return of the device and all accessories in good order at the end of the program or upon leaving the school. The devices will not be available for purchase. The allocated device and accessories remain the property of St Ita’s Primary School.
- Returning devices for scheduled maintenance during school holiday times, as negotiated with the school.

Insurance and Financial Responsibilities

- Insurance coverage related to the 1:1 Device Program
 - The device is covered under the CCI Accidental Damage Protection Insurance and Apple Care Warranty.
 - In the event of **loss**, damage by negligence, **or theft** the family will be required to pay the \$150 excess on the insurance claim or the full cost of repair.
 - The device is not covered by insurance whilst on boats or in aircraft.
- Damage due to neglect or misuse where the insurance claim is rejected
 - If the device suffers damage due to neglect, misuse or repeated careless behavior (as determined by CCI Insurance), the full cost of repair will be the responsibility of the parents. The school will organize the repairs and the family will be invoiced the full cost. The school will issue a replacement device to be used during school hours only. The original device will be reissued after the repairs are complete and the financial commitment is met.